

## VF SERIES Pneumatic Foot Valve

VF

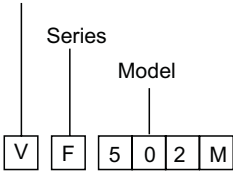


### FEATURES

Highly reliable foot valve with impact resistant safety hood to prevent inadvertent operation. The valves are fitted with NBR seals and may be operated with or without lubrication.

### ORDER INFORMATION

Product Group



### Technical Data

#### MATERIALS

Body	Aluminium
Spool	Nickel plated aluminium
Seals	NBR
Springs	Stainless steel
Internal Parts	Brass
Protection Cover	Shock resistant plastic

#### SPECIFICATIONS

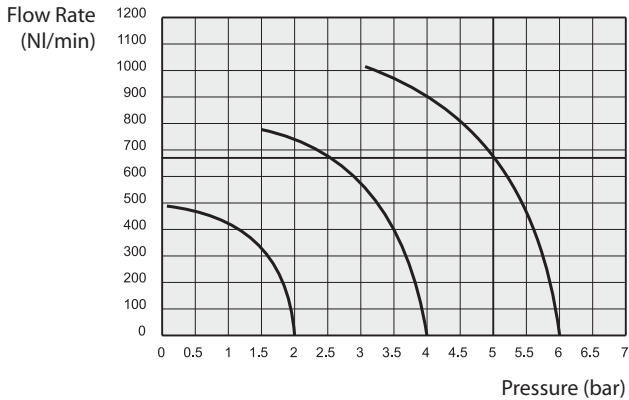
Medium	50µ filtered compressed air, with or without lubrication
Working Pressure	2-10 bar
Temperature Range	NBR: max + 60°C
Nominal Orifice	7.5mm

#### MODEL

502M	Mono-stable
502S	Mono-stable with safety feature
502B	Bi-stable

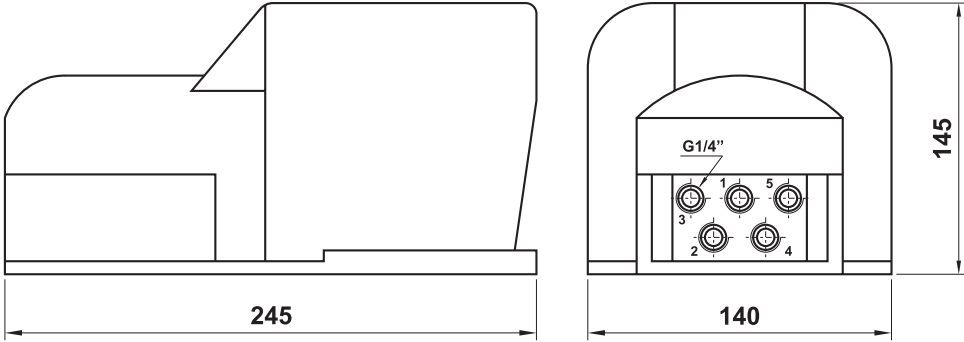
#### SPARE PARTS

RK502 Repair kit for 502/522 series valves.



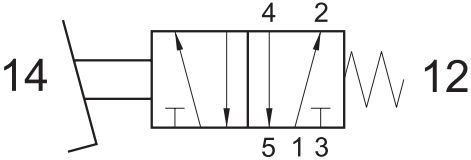
VF SERIES  
Pneumatic Foot Valve

VF

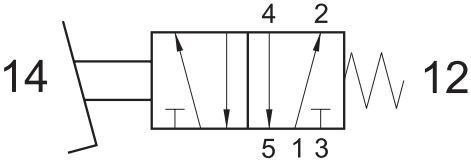


1/4" 5/2 MONO-STABLE

VF PED 502M



VF PED 502S  
With safety feature  
To avoid accidental operation the pedal  
must be fully depressed.



1/4" 5/2 BI-STABLE

VF PED 502B

