

## C1 SERIES

### C1200 Standard Pneumatic Cylinder

ISO 6431 / VDMA 24562

C1



#### FEATURES

Robust, clean profile pneumatic cylinders manufactured to ISO 6431 and VDMA 24562.

Low friction NBR seals. (Viton seals supplied on request).

Pneumatic adjustable cushions.

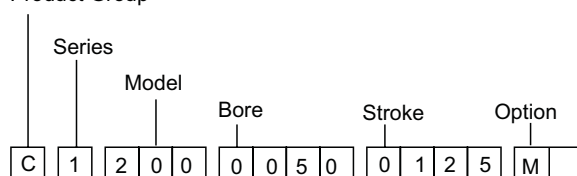
All pistons are magnetic as standard. The barrel is provided with grooves to allow direct mounting of optional reed switches without the need to remove the end caps.

Complete range of mountings and accessories available.

All parts individually replaceable.

#### ORDER INFORMATION

Product Group



#### Technical Data

##### MATERIALS

Barrel	Anodised aluminium
Piston Rod	C45 chromium coated steel
Covers	Aluminium
Piston	Aluminium
Seals	Polyurethane + NBR
Bush	Acetal
Magnet	Magnetic Iron Compound

##### OPERATION

Medium	Compressed air, with or without lubrication
Working Pressure	Max 10 bar
Temperature Range	NBR: max + 60°C Viton: max + 110°C

##### STANDARD BORE SIZES

32, 40, 50, 63, 80, 100, 125, 160, 200

##### STANDARD STROKES

25, 50, 75, 80, 100, 125, 150, 160, 175, 200, 250, 300, 320, 350, 400, 450, 500.

##### SPECIAL STROKES

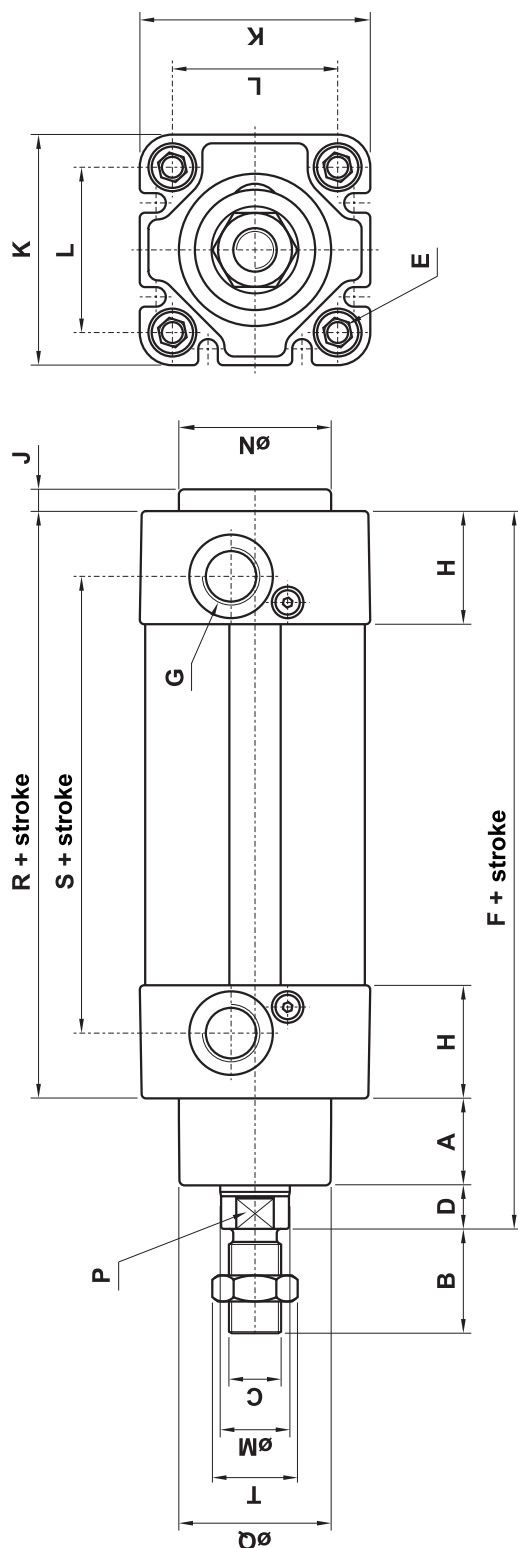
Manufactured to order on request.

##### MODEL

100	D.A. Stainless Steel Rod
101	D.A. Stainless Steel Through Rod
200	D.A. Hard Chrome Plated Rod
201	D.A. Hard Chrome Plated Through Rod

##### OPTIONS

Viton seals - add a 'V'.  
Extended Piston Rod - see CS Series.  
Magnetic - (supplied standard) add an 'M'



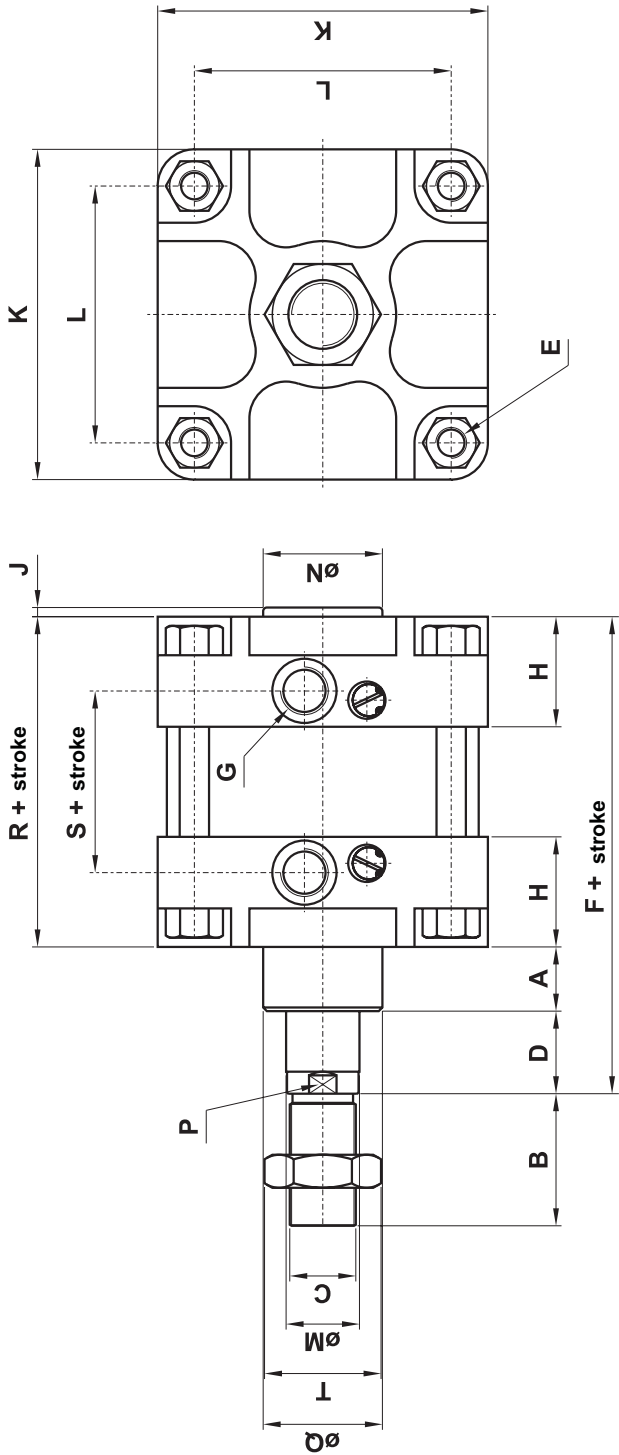
### C1200 Bore 32-125 Standard Pneumatic Cylinder ISO 6431

∅	A	B	C	D	E	F	G	H	J	K	L	M	N	P	Q	R	S	T
32	16	22	M10x1.25	10	M6	120	G1/8"	25.5	5	47	32.5	12	30	10 A/F	30	94	63.6	17 A/F
40	20	24	M12x1.25	10	M6	135	G1/4"	28	5	53	38	16	35	13 A/F	35	105	75	19 A/F
50	25	32	M16x1.5	12	M8	143	G1/4"	30	5	64	46.5	20	40	17 A/F	40	106	69.4	24 A/F
63	25	32	M16x1.5	12	M8	158	G3/8"	31	5	74	56.5	20	45	17 A/F	45	121	85.2	24 A/F
80	32.5	40	M20x1.5	13.5	M10	174	G3/8"	34	5	94	72	25	45	22 A/F	45	128	90	30 A/F
100	35	40	M20x1.5	16	M10	189	G1/2"	35	5	112	89	25	55	22 A/F	55	138	104	30 A/F
125	40	54	M27x2	25	M12	225	G1/2"	41	5	136	110	32	60	27 A/F	60	160	112	41 A/F

C1 SERIES

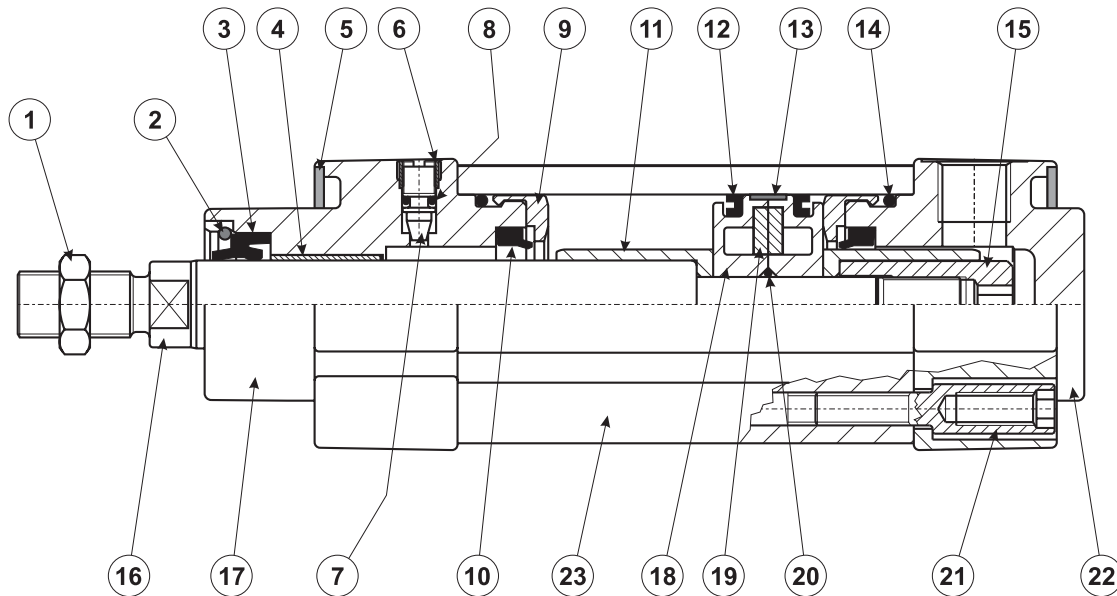
C1200 Standard Pneumatic Cylinder  
BORE 160-200 ISO 6431 / VDMA 24562

C1



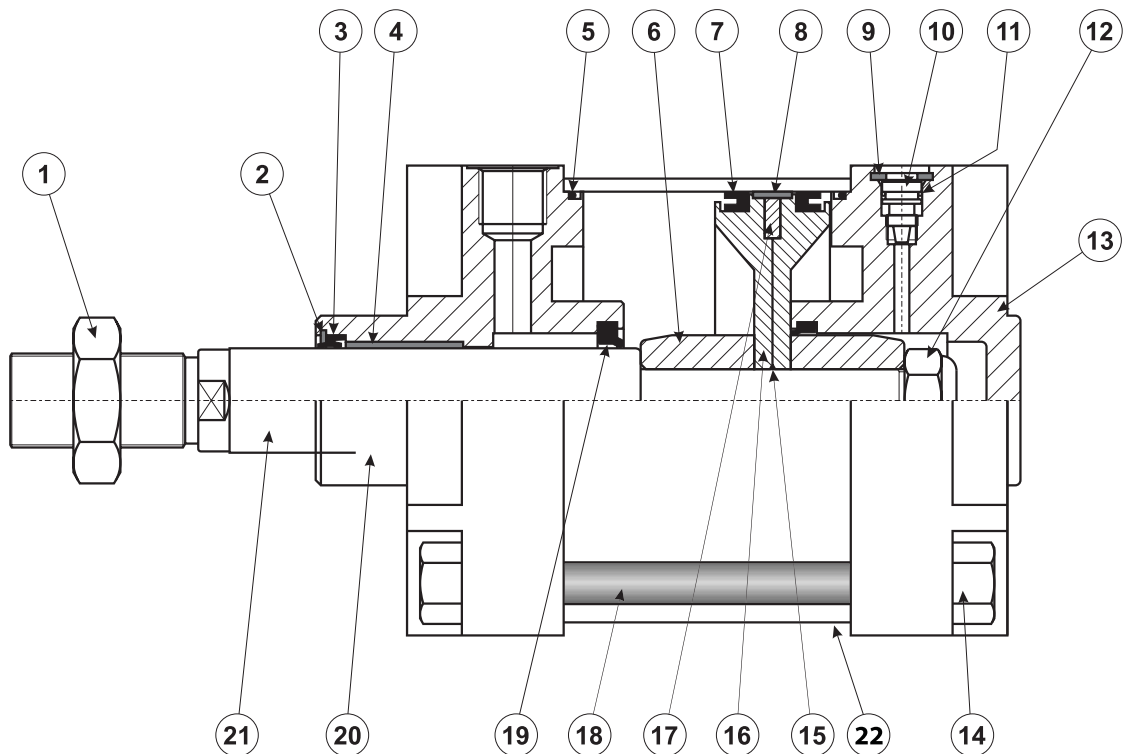
C1200 Bore 160-200 Standard Pneumatic Cylinder ISO 6431

ø	A	B	C	D	E	F	G	H	J	K	L	M	N	P	Q	R	S	T
160	35	72	M36x2	45	M16	260	G3/4"	60	5	180	140	40	65	36 A/F	65	180	103	55 A/F
200	35	72	M36x2	60	M16	275	G3/4"	60	5	220	175	40	75	36 A/F	75	180	106	55 A/F



## C1200 Bore 32-125 Standard Pneumatic Cylinder ISO 6431

- |  |   |
|--|---|
| <b>1.</b> Locknut - Steel              | <b>13.</b> Piston Wear Strip - PTFE               |
| <b>2.</b> Retaining Ring               | <b>14.</b> Barrel Seal - NBR or Viton             |
| <b>3.</b> Rod Seal NBR or Viton        | <b>15.</b> Piston Retaining Nut - Steel           |
| <b>4.</b> Rod Bearing - Non Lube       | <b>16.</b> Piston Rod - Steel 1045 or SS AISI 304 |
| <b>5.</b> Dust Seal - Nylon            | <b>17.</b> Rod End Cover - Aluminium              |
| <b>6.</b> Retainer - Cushion Screw     | <b>18.</b> Piston - Aluminium                     |
| <b>7.</b> Cushion Screw                | <b>19.</b> Magnet                                 |
| <b>8.</b> "O" Ring - NBR or Viton      | <b>20.</b> "O" Ring - NBR or Viton                |
| <b>9.</b> Shock Absorber - Hytrel      | <b>21.</b> Cover Bolt - Steel                     |
| <b>10.</b> Cushion Seal - NBR or Viton | <b>22.</b> Head End Cover - Aluminium             |
| <b>11.</b> Cushion Spear - Aluminium   | <b>23.</b> Barrel - Anodised Aluminium            |
| <b>12.</b> Piston Seal - NBR or Viton  |   |



**C1200 Bore 160-200 Standard Pneumatic Cylinder ISO 6431**

- |   |   |
|---|---|
| <b>1.</b> Locknut - Steel               | <b>13.</b> Head End Cover - Aluminium             |
| <b>2.</b> Retaining Ring                | <b>14.</b> Tie Rod Nut - Steel                    |
| <b>3.</b> Rod Seal NBR or Viton         | <b>15.</b> "O" Ring - NBR or Viton                |
| <b>4.</b> Rod Bearing - Non Lube        | <b>16.</b> Piston - Aluminium                     |
| <b>5.</b> Barrel Seal - NBR or Viton    | <b>17.</b> Magnet                                 |
| <b>6.</b> Cushion Spear - Aluminium     | <b>18.</b> Tie Rod - AISI 304                     |
| <b>7.</b> Piston Seal - NBR or Viton    | <b>19.</b> Cushion Seal - NBR or Viton            |
| <b>8.</b> Piston Wear Strip - PTFE      | <b>20.</b> Rod End Cover - Aluminium              |
| <b>9.</b> Retainer - Cushion Screw      | <b>21.</b> Piston Rod - Steel 1045 or SS AISI 304 |
| <b>10.</b> Cushion Screw                | <b>22.</b> Barrel - Anodised Aluminium            |
| <b>11.</b> "O" Ring - NBR or Viton      |   |
| <b>12.</b> Piston Retaining Nut - Steel |   |